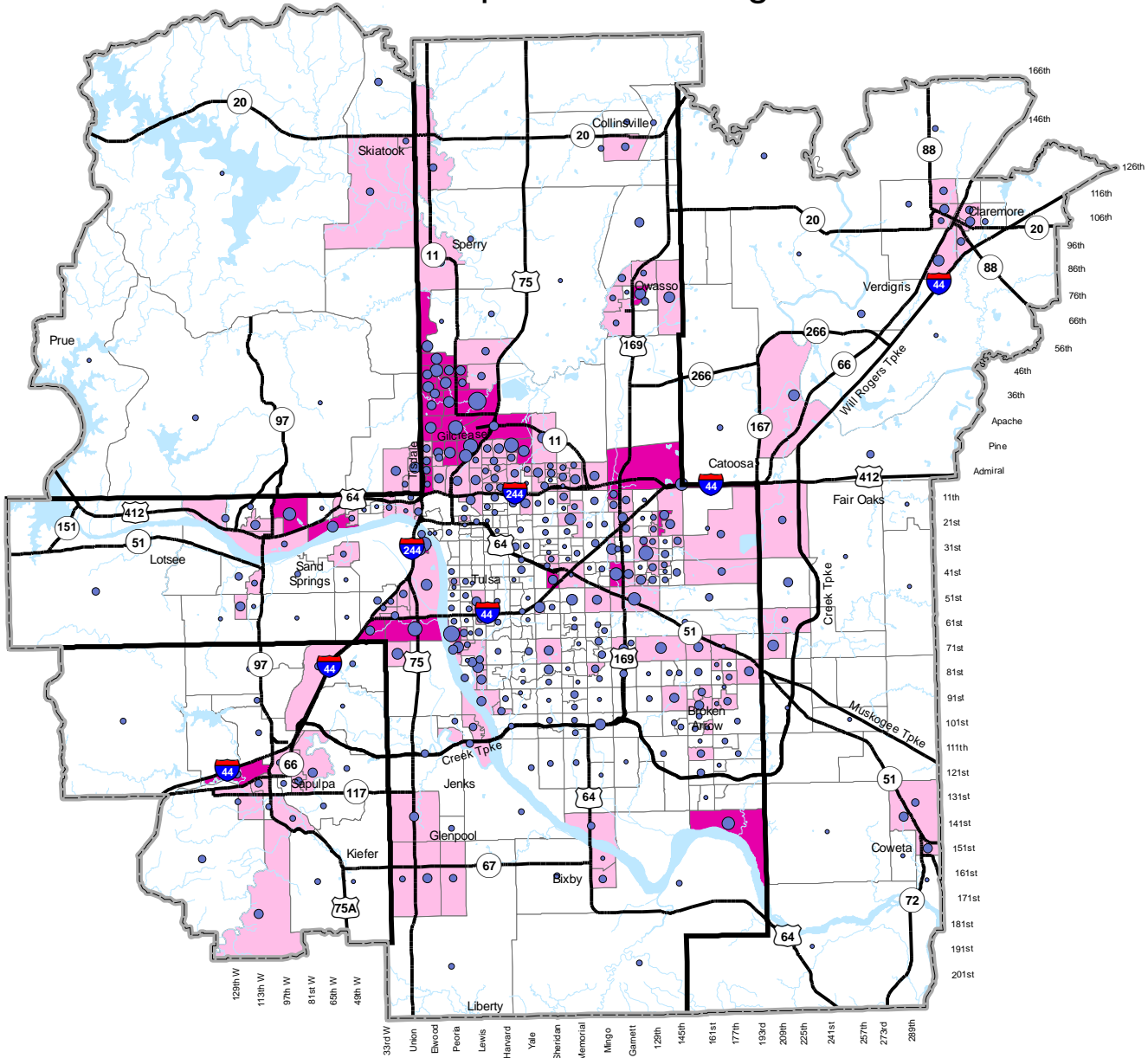


Concentrations of Female - Single Headed Households with Children Less than 18 Years Old Within the Transportation Management Area



Legend

- TMA Boundary
- Tulsa County Boundary
- TMA Female-Single Headed Households with Children <18 Population Standard Deviation**
- Less than 1.00
- From 1.00 to 1.99
- Greater than 2.00
- # Female-Single Headed Households with Children <18 by block group***
- Total Number**
- 10
- 50
- 100
- Highways
- Water Bodies
- Streams

Total TMA Households = 277,192

TMA Female-Single Headed Households with Children <18 = 23,413

Percent Female-Single Headed Households with Children <18 within TMA = 8.4%

*Block groups of 20 or more Female-Single Headed Households with Children <18 are represented on the map

Standard Deviation is a comparison of the percent of Female-Single Headed Households with Children <18 population for that block group to the same percentage for the entire TMA. The higher the number the greater the concentration of the Female-Single Headed Households with Children <18 population.

Map prepared by INCOG, 8/30/05, source - 2000 Census Data SF-1 by block group

